



1250 LB. CAPACITY MECHANICAL WHEEL DOLLY

OWNER'S MANUAL



WARNING:

Read carefully and understand all **ASSEMBLY AND OPERATION INSTRUCTIONS** before operating. Failure to follow the safety rules and other basic safety precautions may result in serious personal injury.

Item# 37809

Thank you very much for choosing a IRONTON product. For future reference, please complete the owner's record below:

Model: _____ Purchase Date: _____

Save the receipt, warranty and these instructions. It is important that you read the entire manual to become familiar with this product before you begin using it.


This machine is designed for certain applications only. The distributor cannot be responsible for issues arising from modification. We strongly recommend this machine not be modified and/or used for any application other than that for which it was designed. If you have any questions relative to a particular application, DO NOT use the machine until you have first contacted the distributor to determine if it can or should be performed on the product.


For technical questions please call 1-800-222-5381.


TECHNICAL SPECIFICATIONS

Weight Capacity	1250 lb.
Maximum Tire Width Capacity	10"
Distance Between Rollers (Center to Center)	13-1/2" (Minimum) 28-3/4" (Maximum)
Weight	38.8 lb.

GENERAL SAFETY RULES

 **WARNING:** Read and understand all instructions. Failure to follow all instructions listed below may result in serious injury.

 **CAUTION:** Do not allow persons to operate or assemble this mechanical wheel dolly until they have read this manual and have developed a thorough understanding of how the mechanical wheel dolly works.

 **WARNING:** The warnings, cautions, and instructions discussed in this instruction manual cannot cover all possible conditions or situations that could occur. It must be understood by the operator that common sense and caution are factors which cannot be built into this product, but must be supplied by the operator.

SAVE THESE INSTRUCTIONS



Safety Warnings and Precautions

WARNING: When using product, basic safety precautions should always be followed to reduce the risk of personal injury and damage to equipment.

Read all instructions before using this product!

1. **Keep work area clean.** Cluttered areas invite injuries.
2. **Observe work area conditions.** Do not use machines or power tools in damp or wet locations. Don't expose to rain. Keep work area well lighted.
3. **Keep children away.** Children must never be allowed in the work area.
4. **Store idle equipment.** When not in use, this product must be stored in a dry location to inhibit rust.
5. **Use the right product for the job.** Do not attempt to force a small product or attachment to do the work of a larger industrial product. There are certain applications for which this product was designed. It will do the job better and more safely at the rate for which it was intended. Do not exceed weight capacity of 1250 lb. rated capacity. Do not modify this product and do not use this product for a purpose for which it was not intended.
6. **Use eye and ear protection.** Always wear ANSI-approved impact safety goggles and dust mask or respirator when working around metal, wood, and chemical dusts and mists.
7. **Do not overreach.** Keep proper footing and balance at all times.
8. **Maintain product with care.** Keep product clean for better and safer performance.
9. **Stay alert.** Watch what you are doing, use common sense. Do not operate any product when you are tired.
10. **Check for damaged parts.** Before using any product, any part that appears damaged should be carefully checked to determine that it will operate properly and perform its intended function. Check for alignment and binding of moving parts; any broken parts or mounting fixtures; and any other condition that may affect proper operation. Any part that is damaged should be properly repaired or replaced by a qualified technician.
11. **Replacement parts and accessories.** When servicing, use only identical replacement parts. Use of any other parts will void the warranty.

11. **Replacement parts and accessories.** When servicing, use only identical replacement parts. Use of any other parts will void the warranty.
12. **Do not operate product if under the influence of alcohol or drugs.** Read warning labels if taking prescription medicine to determine if your judgment or reflexes are impaired while taking drugs. If there is any doubt, do not operate the product.

Warning: The warnings, cautions, and instructions discussed in this instruction manual cannot cover all possible conditions and situations that may occur. It must be understood by the operator that common sense and caution are factors which cannot be built into this product, but must be supplied by the operator.

Unpacking

When unpacking, check to make sure all parts listed on Page 7 are included.

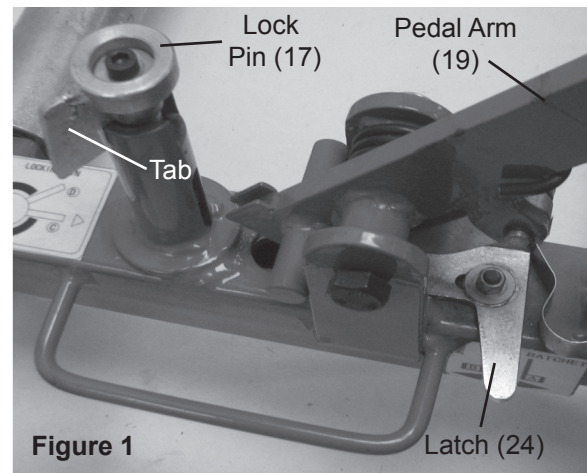
ASSEMBLY

1. Use Nut (1) and Spring Washer (2) to fasten a Caster (3) to each of the Rod Assemblies (4), the Outer Body Axle Assembly (9) and the Inner Body Axle Assembly (10). See the Parts Diagram on Page 7 for reference.
2. Slide each Roller (8) over each Rod Assembly. See the Parts Diagram on Page 7 for reference.
3. Remove Lock Nut (5) and Bolt (6) from each Rod Assembly. Slide Roller (8) and Washer (7) onto Rod Assembly. Slide Rod Assembly into square tube on Outer Body Axle Assembly (9). Fasten together using Lock Nut and Bolt, making sure all connections are tightened firmly.
4. Repeat Step 3, on with the Inner Body Axle Assembly (10), making sure all connections are tightened firmly.

OPERATION

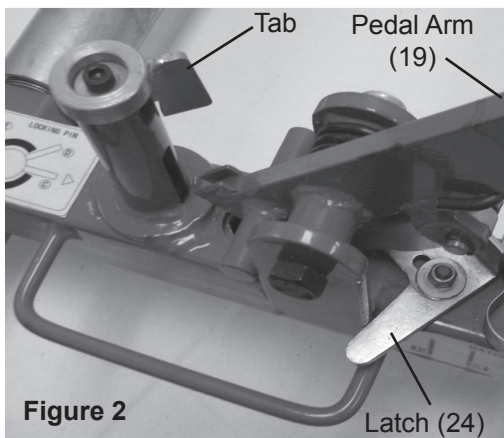
IMPORTANT! BEFORE FIRST USE:

- **Thoroughly lubricate and test the Wheel Dolly for proper operation.**
1. Position Dolly in front of tire and slide Latch (24) to right. Lift Lock Pin (17) and rotate counterclockwise until tab faces away from Pedal Arm (19). See Figure 1.
 2. Place hands on Rollers (8) and spread apart to tire width required.
 3. Roll Dolly forward, centering Rollers against tire.



LIFTING WHEEL

1. Slide Latch to left. Then turn Lock Pin clockwise until it retracts into ratchet. Turn tab counterclockwise, keeping it away from end of Pedal Arm. See Figure 2.

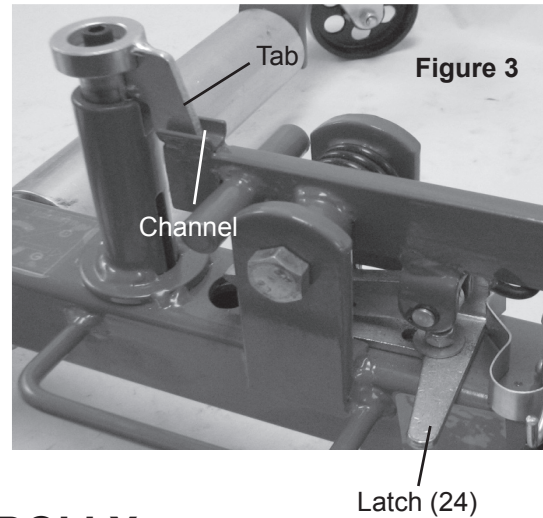


4. If needed, raise every other wheel with its own separate Wheel Dolly. **WARNING!** Be ready for any movement the vehicle may make when next wheel comes off the ground.
5. **WARNING!** Before the vehicle has been placed on all four Wheel Dollies, ensure that you have sufficient assistance and manpower to safely guide and control the vehicle.
6. Stay clear of any sloping areas or entry ramps, however shallow they may appear. Sufficient space should be allowed between the side of the vehicle and an adjacent wall for the vehicle to be withdrawn from its loca-

2. Place foot on Pedal and pump in full strokes, forcing the Rollers to come in (closer together).
3. Continue raising the tire until it is approximately 3/4" off the ground.

LOWERING WHEELS

1. To lower the Wheel Dolly, slide the Latch counterclockwise (to the right). Turn Tab clockwise, making sure it aligns with the channel at the end of the Pedal Arm. See Figure 3.
2. Push Pedal down and release. Continue until tire fully rests on the ground.



REMOVING DOLLY

1. Keep Latch in right position.
2. Lift Lock Pin (17) and turn right (counterclockwise) until Tab faces away from Pedal Arm.
3. Place hands on Rollers and spread them apart to clear tire.
4. Pull Dolly away from tire, retract Rollers, and turn Pin right to engage ratchet. While keeping Tab away from Pedal arm, push Pedal down and lock in place with wire latch.

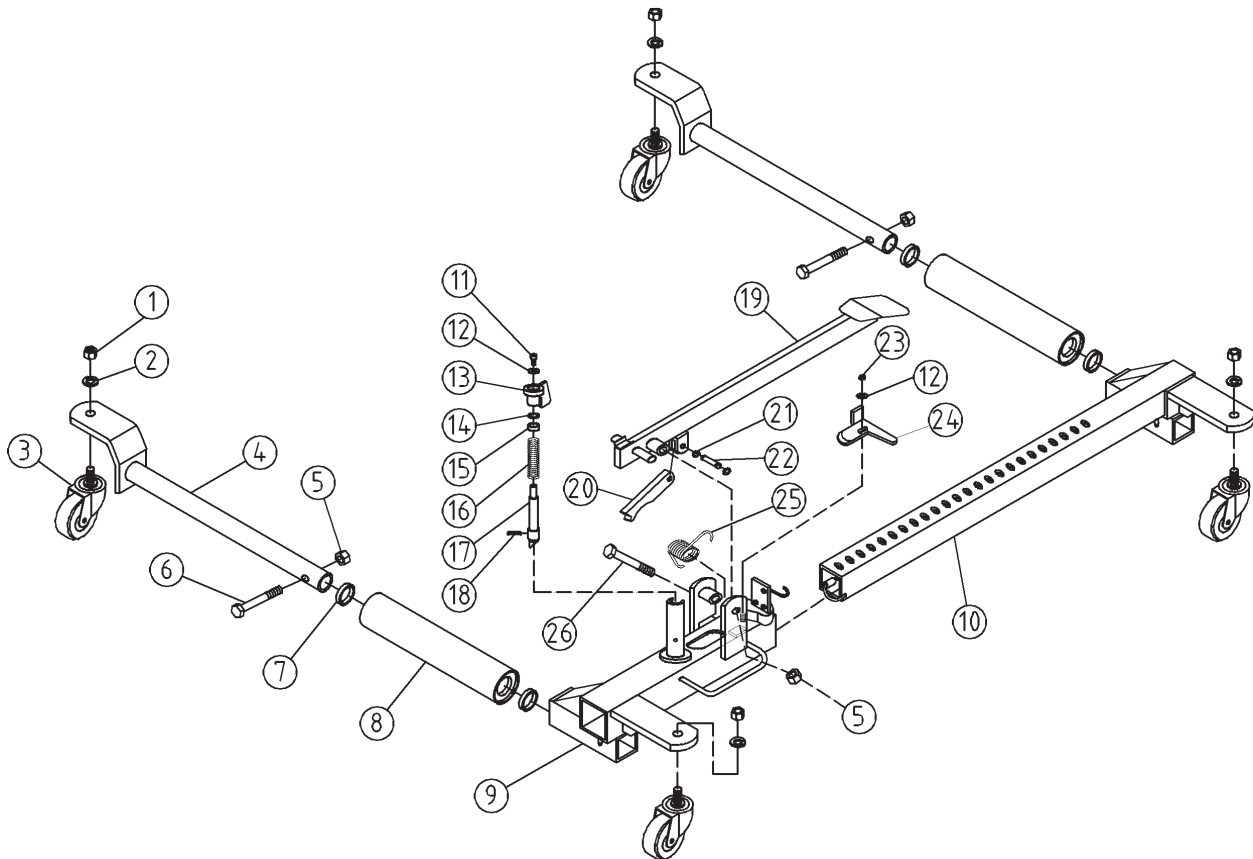
PLEASE READ THE FOLLOWING CAREFULLY

THE MANUFACTURER AND/OR DISTRIBUTOR HAS PROVIDED THE PARTS DIAGRAM IN THIS MANUAL AS A REFERENCE TOOL ONLY. NEITHER THE MANUFACTURER NOR DISTRIBUTOR MAKES ANY REPRESENTATION OR WARRANTY OF ANY KIND TO THE BUYER THAT HE OR SHE IS QUALIFIED TO MAKE ANY REPAIRS TO THE PRODUCT OR THAT HE OR SHE IS QUALIFIED TO REPLACE ANY PARTS OF THE PRODUCT. IN FACT, THE MANUFACTURER AND/OR DISTRIBUTOR EXPRESSLY STATES THAT ALL REPAIRS AND PARTS REPLACEMENTS SHOULD BE UNDERTAKEN BY CERTIFIED AND LICENSED TECHNICIANS AND NOT BY THE BUYER. THE BUYER ASSUMES ALL RISK AND LIABILITY ARISING OUT OF HIS OR HER REPAIRS TO THE ORIGINAL PRODUCT OR REPLACEMENT PARTS THERETO, OR ARISING OUT OF HIS OR HER INSTALLATION OF REPLACEMENT PARTS THERETO.

PARTS LIST AND ASSEMBLY DIAGRAM

Part	Description	Q'ty
1	Nut M12	4
2	Spring Washer 12	4
3	Caster Assembly	4
4	Rod Assembly	2
5	Lock Nut M12	3
6	Bolt M12*55	2
7	Washer	4
8	Roller Assembly	2
9	Outer Body Axle Assembly	1
10	Inner Body Axle Assembly	1
11	Screw M6*10	1
12	Big Washer 6	2
13	Carry Head Assembly	1

Part	Description	Q'ty
14	Spring Ring	1
15	Bushing	1
16	Spring	1
17	Lock Pin	1
18	Spring Pin 4*16	1
19	Pedal Arm	1
20	Support Plate	1
21	Retaining Ring 8	2
22	Axis	1
23	Lock Nut M6	1
24	Latch	1
25	Retaining Spring	1
26	Bolt M12*80	1



Note: Some parts are listed and shown for illustration purposes only and are not available individually as replacement parts.

For technical questions, please call 1-800-222-5381.

Limited 90 Day Warranty

Northern Tool + Equipment Co., Inc. makes every effort to assure that its products meet high quality and durability standards, and warrants to the original purchaser that this product is free from defects in materials and workmanship for the period of 90 days from the date of purchase. This warranty does not apply to damage due directly or indirectly, to misuse, abuse, negligence or accidents, repairs or alterations outside our facilities, criminal activity, improper installation, normal wear and tear, or to lack of maintenance. We shall in no event be liable for death, injuries to persons or property, or for incidental, contingent, special or consequential damages arising from the use of our product. Some states do not allow the exclusion or limitation of incidental or consequential damages, so the above limitation of exclusion may not apply to you. THIS WARRANTY IS EXPRESSLY IN LIEU OF ALL OTHER WARRANTIES, EXPRESS OR IMPLIED, INCLUDING THE WARRANTIES OF MERCHANTABILITY AND FITNESS.

To take advantage of this warranty, the product or part must be returned to us with transportation charges prepaid. Proof of purchase date and an explanation of the complaint must accompany the merchandise. If our inspection verifies the defect, we will either repair or replace the product at our election or we may elect to refund the purchase price if we cannot readily and quickly provide you with a replacement. We will return repaired products at our expense, but if we determine there is no defect, or that the defect resulted from causes not within the scope of our warranty, then you must bear the cost of returning the product.

This warranty gives you specific legal rights and you may also have other rights which vary from state to state.

Distributed by
Northern Tool + Equipment Co., Inc.
Burnsville, Minnesota 55306-6936
NorthernTool.com
Made in China