



Vertical Sandblast Cabinet

OWNER'S MANUAL



WARNING:

Read carefully and understand all **ASSEMBLY AND OPERATION INSTRUCTIONS** before operating. Failure to follow the safety rules and other basic safety precautions may result in serious personal injury.

Model # STF-40FCB

Thank you very much for choosing this product! For future reference, please complete the owner's record below:

Model: STF-40FCB Purchase Date: _____

Save the receipt, warranty and these instructions. It is important that you read the entire manual to become familiar with this product before you begin using it.

This product is designed for certain applications only. The manufacturer cannot be responsible for issues arising from modification. We strongly recommend this product not be modified and/or used for any application other than that for which it was designed. If you have any questions relative to a particular application, DO NOT use the product until you have first contacted us to determine if it can or should be performed on the product.

For technical questions please call **1-218-943-6296**.

INTENDED USE

The STF-40FCB Vertical Sandblast Cabinet helps keep your workspace clean and free of debris. The large work area is at a height for a comfortable standing position while you work. The top window provides excellent visibility. The cabinet is constructed of 19 gauge steel construction and includes gun with ceramic nozzle, hose gloves and fluorescent lighting system.

TECHNICAL SPECIFICATIONS

Item	Description
Assembled Dimensions	55" x 22.5" x 34.5"
Weight	92 lbs
Electrical Requirements of Light	110V
Operating PSI	80 PSI (125 PSI max)
Media Types	Sand, glass and oxide media
Media Capacity (cu. ft.)	40 lbs
Nozzle Sizes	0.18", 0.20", 0.22", 0.27"
Air Dryer	Use for your compressor

GENERAL SAFETY RULES



WARNING: Read and understand all instructions. Failure to follow all instructions listed below may result in serious injury.



CAUTION: Do not allow persons to operate or assemble this sandblast cabinet until they have read this manual and have developed a thorough understanding of how the sandblast cabinet works.



WARNING: The warnings, cautions, and instructions discussed in this instruction manual cannot cover all possible conditions or situations that could occur. It must be understood by the operator that common sense and caution are factors which cannot be built into this product, but must be supplied by the operator.

SAVE THESE INSTRUCTIONS

WORK AREA

- **Keep work area clean**, free of clutter and well lit. Cluttered and dark work areas can cause accidents.
- **Keep children and bystanders** away while operating a sandblast cabinet. Distractions can cause you to lose control, so visitors should remain at a safe distance from the work area.
- **Be alert of your surroundings.**

PERSONAL SAFETY

- **Stay alert**, watch what you are doing and use common sense when using a sandblast cabinet. Do not use a sandblast cabinet while you are tired or under the influence of drugs, alcohol or medication. A moment of inattention while operating a sandblast cabinet may result in serious personal injury.
- **Dress properly.** Do not wear loose clothing, dangling objects, or jewelry. Keep your hair, clothing and gloves away from moving parts. Loose clothes, jewelry or long hair can be caught in moving parts.
- **Use safety apparel and equipment.** Use safety goggles or safety glasses with side shields which comply with current national standards, or when needed, a face shield. Use a dust mask if working in dusty work conditions. This applies to all persons in the work area. Also use non-skid safety shoes, hardhat, gloves, dust collection systems, and hearing protection when appropriate.

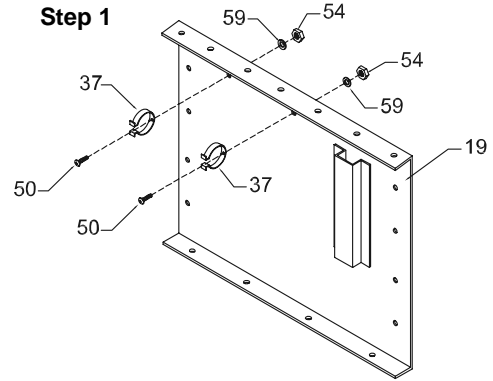
SANDBLAST CABINET USE AND CARE

- **Do not modify the sandblast cabinet in any way.** Unauthorized modification may impair the function and/or safety and could affect the life of the equipment. There are specific applications for which the sandblast cabinet was designed.
- **Always check for damaged or worn out parts before using the sandblast cabinet.** Broken parts will affect the sandblast cabinet operation. Replace or repair damaged or worn parts immediately.
- **Replace gloves.** Cabinet gloves do wear. Replace as necessary
- **Do not exceed the sandblast cabinet load capacity.**
- **Distribute the load evenly.** Uneven loads may cause the sandblast cabinet to tip, resulting in personal injury to the operator or others.
- **Use the sandblast cabinet on flat and level surfaces** capable of supporting the sandblast cabinet and its maximum load. Pulling or pushing a load on a slanted or uneven surface can result in loss of control.
- **Store idle sandblast cabinet.** When sandblast cabinet is not in use, store it in a secure place out of the reach of children. Inspect it for good working condition prior to storage and before re-use.
- **Use grounded receptacle only** for electrical hookup. Requires 120V volts to operate the light.
- **Disconnect incoming air line** when adding abrasives or when servicing hoses, power gun or other components.
- **It is recommended to have an air dryer for your compressor being used for the Sand Blaster.**

ASSEMBLY

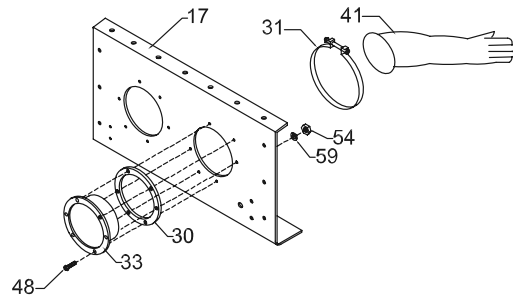
Step 1 – Cabinet Rear Plate Assembly

Attach the Light Clamps (#37) on the inside of the Cabinet Rear Plate(#19) using the Bolts (#50), Flat washers (#59) and Hex Nuts (#54)



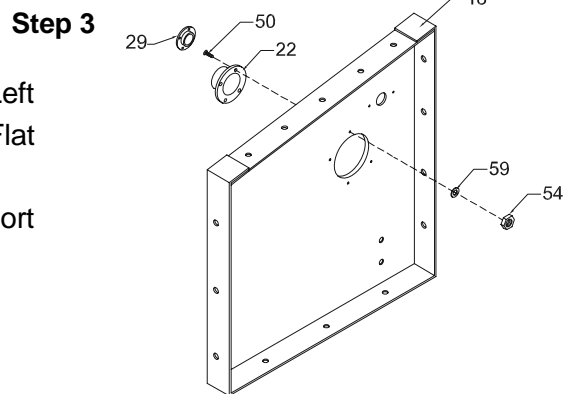
Step 2– Cabinet Front Plate Assembly

1. Install the Gloves Mounting Ring (#33) and Glove Seal Ring (#30) on the Cabinet Front Plate (#17) using the Bolts (#48), Flat Washers (#59) and Hex Nuts (#54).
2. Slide the Glove (#41) over the Glove Mounting Rings and secure in place with the Glove Clamp (#31).



Step 3– Cabinet Left Plate Assembly

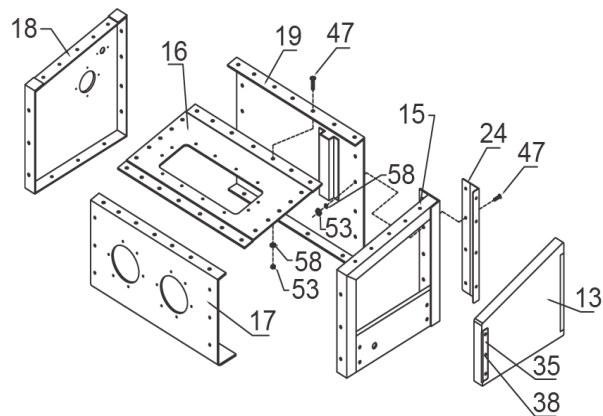
1. Attach the Dust Port (#22) to the outside of the Left Cabinet Plate (#18) using the Bolts (#50), Flat washers (#59) and Hex Nuts (#54).
2. Attach the Dust Port Cover (#29) to the Dust Port (#22).



Step 4

Step 4 – Cabinet Assembly

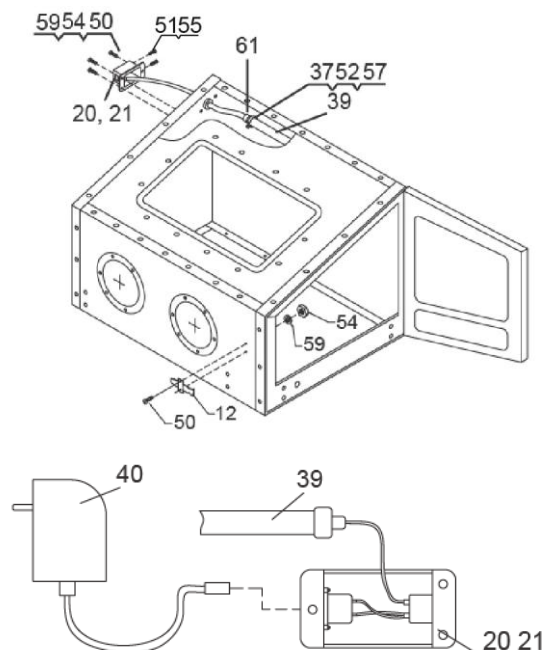
1. Attach the Front Cabinet Plate (#17) and the Rear Cabinet Plate (#19) to the top edges of the Roof (#16) overlapping the front and back flanges over the edges of the roof using Bolts (#47), Flat Washers (#58) and Nuts (#53) – use the middle three holes first. **Leave all bolts loose until all bolts are in place.**
2. Place the Left Cabinet Plate (#18) over the edges of the Front and Rear Cabinet Plates and the Roof. Secure in place using Bolts (#47), Flat Washers (#58) and Nuts (#53).
3. Align the holes of the Hinge (#24) along the back edge of the Rear Cabinet Plate and secure in place using Bolts (#47), Flat Washers (#58) and Nuts (#53).
4. Attach the Door Frame (#15) to the other side of the Front and Rear Cabinet Plates and the Roof. Place the Hinge (#24) over the back edge of the Door (#13), aligning all holes. Secure in place using Bolts (#47), Flat Washers (#58) and Nuts (#53).
5. After all hardware is in place, tighten all bolts.
6. Attach Metal Liner (#35) using Tapping Screw (#38).



Step 5

Step 5 – Light and Switch Assembly

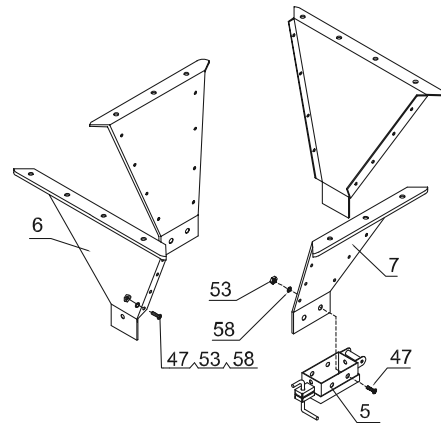
1. Place the Light (#39) in the Light Clamps (#37) and secure with Cross Pan Head Screw M6x45 (#61), Flat Washer (#57) and Flange Nut (#52).
2. Guide the wire of the Light out through the hole of the Cabinet Left Plate and tighten the nuts to the Left Plate.
3. Insert the end of the wire into the Switch (#21).
4. Install the Switch (#21) and Switch Box (#20) on the Cabinet Left Plate with the Bolts (#50), Flat Washers (#59), Nuts (#54) and Bolts (#51), Nuts (55). Install the Latch (#12) on the Cabinet Front Plate with the Bolts (#50), Flat Washers (#59) and Nuts (#54).



Step 6 – Funnel Assembly

1. Place the Funnel Left and Right Plates (#7) on the inside flanges of the Funnel Front and Rear Plate (#6) and secure in place with the Bolts (#47), Flat Washers (#58) and Nuts (#53).
2. Slide the Funnel Mouth (#5) over the bottom of the assembly and secure in place with the Bolts (#47), Flat Washers (#58) and Nuts (#53).

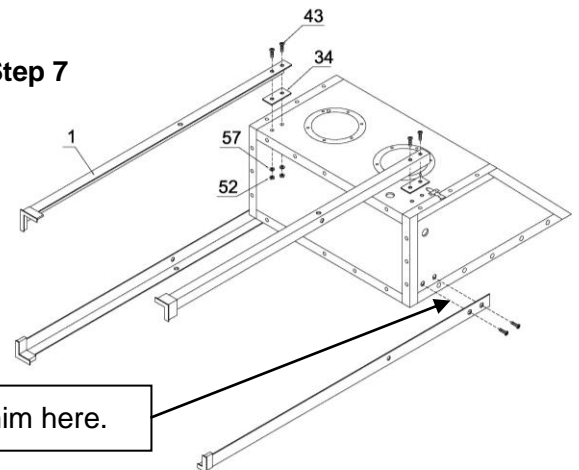
Step 6



Step 7 – Legs Assembly

Align the holes of the two rear Legs (#1) and Cabinet holes as shown at right, and secure in place with the Bolts (#43), Flat Washer (#57) and Nuts (#52). Repeat with the front Legs (#1), sliding the Shims (#34) between the Legs and Cabinet before inserting the Bolts and securing in place. Slide Feet (#32) on to bottom of legs.

Step 7



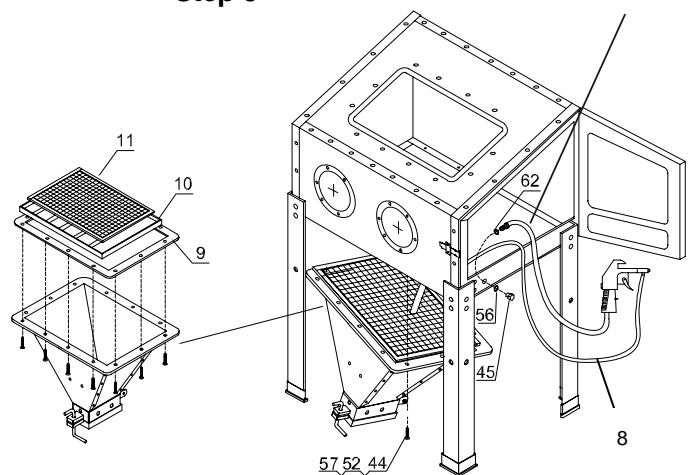
There is no Shim here.

Air Inlet Hose

Step 8

Step 8 – Funnel and Cabinet Connection

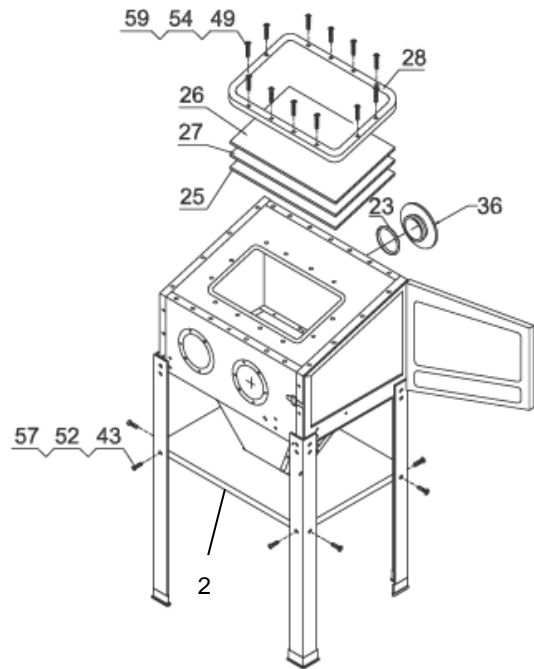
1. Place the Bottom Plate (#9), Screen Frame (#10) a Steel Screen (#11) on top of the Funnel and secure the assembly to the bottom of the Cabinet with the Bolts (#44), Flat Washers (#57) and Nuts (#52).
2. Attach the Air Inlet Hose of the Abrasive Gun (#8) to the inside lower right side of the Cabinet and the Hose Inlet Fitting (#45) to the outside, using the Flat Washer (#56 and #62).
3. Slide the suction hose end of the Abrasive Gun (#8) end into the Funnel through the Screen.



Step 9

Step 9 –Shelf and Frame Assembly

1. Install the Shelf (#2) with the Bolts (#43), Flat Washers (#57) and Nuts (#52).
2. Layer the Protective Film (#25), Glass (#27), Acrylic Glass (#26) and Frame (#28) over the opening on the Roof (#16) using Bolts (#49), Flat Washers (#59) and Nuts (#54).
3. Attach Large Cover (#36) using a Seal Ring (#23).



 **WARNING: Keep door closed when in use.**

 **WARNING: Only used media designed for this cabinet.**

 **WARNING: Do not exceed maximum capacity of 40 lbs of media.**

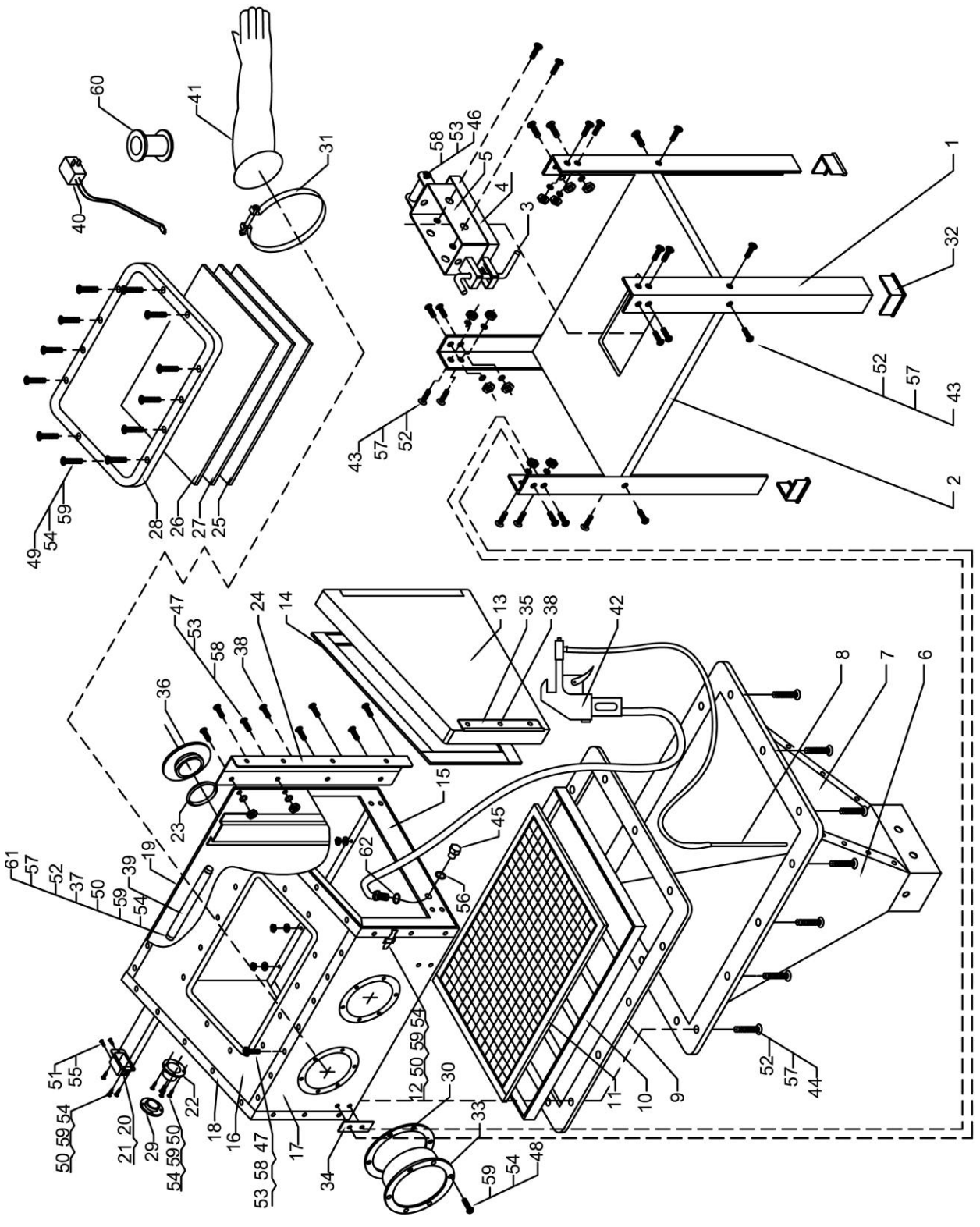
 **WARNING: Make sure legs are properly installed.**

 **WARNING: Operate Sandblast Cabinet on a flat and level surface.**

MAINTENANCE

- **Maintain your sandblast cabinet.** It is recommended that the general condition of any sandblast cabinet be examined before it is used. Keep your sandblast cabinet in good repair by adopting a program of conscientious repair and maintenance. If any abnormal vibrations or noise occurs, have the problem corrected before further use. Have necessary repairs made by qualified service personnel. Replace gloves as necessary.

DIAGRAM & PARTS LIST



Ref#	Description	Qty
1	Leg	4
2	Shelf	1
3	Handle	1
4	Removal Cover	1
5	Funnel Mouth	1
6	Funnel Plate (Front, Rear)	2
7	Funnel Plate (Left, Right)	2
8	Section Hose	1
9	Bottom Plate	1
10	Screen Frame	1
11	Steel Screen	1
12	Latch	1
13	Door	1
14	Foam Seal	1
15	Door Frame	1
16	Roof	1
17	Cabinet Front Plate	1
18	Cabinet Left Plate	1
19	Cabinet Rear Plate	1
20	Switch Box	1
21	Switch	1
22	Dust Port	1
23	Seal Ring	1
24	Hinge	1
25	Protection Film	1
26	Acrylic Glass	1
27	Glass	1
28	Frame	1
29	Dust Port Cover	1
30	Glove Seal Ring	2
31	Glove Clamp	2

Ref#	Description	Qty
32	Feet	4
33	Gloves Mounting Ring	2
34	Leg Shim	3
35	Metal Liner	1
36	Large Cover	1
37	Light Clamp	2
38	Nylon Threads M4x12	11
39	Light Lamp	1
40	Transformer	1
41	Glove	2
42	Abrasive Gun	1
43	Cross Pan Head Screw M6x12	24
44	Cross Pan Head Screw M6x25	14
45	Hose Inlet Fitting	1
46	Cross Pan Head Screw M5x50	1
47	Flange Bolt M5x12	60
48	Cross Pan Head Screw M4x16	12
49	Cross Pan Head Screw M4x20	12
50	Cross Pan Head Screw M4x10	11
51	Cross Pan Head Screw M2x10	2
52	Hex Nut with Flange M6	40
53	Hex Nut with Flange M5	60
54	Hex Nut M4	35
55	Hex Nut M2	2
56	Flat Washer Ø14	1
57	Flat Washer Ø6	40
58	Flat Washer Ø5	60
59	Flat Washer Ø4	35
60	PTFE Tape	1
61	Cross Pan Head Screw M6x45	2
62	Flat Washer Ø12	1

HOW IT WORKS

Your shop air hose enters front opening of cabinet and is connected to the air inlet of power gun. Bottom handle of gun has 1/4" pipe threads which will fit most air hoses. Cabinet pickup tube leads to clear siphon hose which connects to gun head assembly.

INSTRUCTIONS

Pour glass beads or other abrasive into cabinet hopper through the side loading door. Place parts to be blasted in the cabinet and close the door. Do not over fill (1/2 full below work area screen is best). With hands in cabinet gloves, aim abrasive gun at object. Pull trigger and let our unique siphon recycling system do the rest. Rust, paint and scale are quickly removed leaving the original metal clean and intact. The abrasive drops to the bottom of cabinet for continual recycling each time power gun is activated.

Abrasive can be re-used until it eventually breaks down or becomes dusty. To discard worn abrasive simply place empty box under spring loaded trap door. Add more abrasive and resume blasting.

Connect your shop vac to vacuum ferrule. It is necessary to remove the dust created in blasting. When using a shop vacuum, be sure to install the paper filter over the standard filter. Otherwise, abrasive could work its way into the vacuum motor, causing bearing failure.

Located on right front of cabinet is an opening for your air hose from your compressor. An ordinary 3/8" ID air hose should fit through this opening. Connect air hose to bottom handle of power gun by screwing into place (use teflon tape or pipe compound-do not over tighten).Close door and pull trigger a few times to test operation.

NOTE: Use a fine grade of abrasive to prevent clogging. We recommend straining through a double layer of ordinary window screen. If it passes through the screen, it will pass through the nozzle. **YOU ARE READY TO START SAND BLASTING.**

For replacement parts and technical questions, please call **1-218-943-6296**.

WARRANTY

One-year limited parts warranty



TG
PO BOX 203
Miltona, MN 56354